

# INSTALLATION INSTRUCTIONS

## DRAG SPECIALTIES ENGINE GUARD FLOORBOARDS F/1998 GL Models w/ OEM ENGINE GUARDS P/N DS-720221/2

**ATTENTION INSTALLER** (if other than owner): Please forward this instruction sheet to the purchaser of this product. These instructions contain valuable information necessary to the end user.

**INTRODUCTION:** These instructions describe the procedure for properly installing these Drag Specialties Engine Guard Floorboards on 1998 GL1500 models with OEM engine guards.

Review instructions carefully before beginning, as they contain important information. Please compare the parts list with the contents of the box before removing any parts from the motorcycle. Please retain for future reference.

Particularly important information is distinguished in these instructions by the following notations:

**NOTE:** A NOTE provides key information to make procedures easier or clearer.

**CAUTION:** A CAUTION indicates special procedures that must be followed to avoid damage to the motorcycle and/or accessories.

**WARNING!:** A WARNING indicates special procedures that must be followed to avoid injury to a motorcycle operator or person inspecting or repairing the motorcycle.

### TOOLS REQUIRED:

1/2" combination wrench    5mm hex key    flat blade screwdriver

### PROCEDURE:

**NOTE:** There are 2 different saddle weldments that clamp to the engine guards in this kit. The difference is in the location of the weldnut. Make sure that you select the correct part according to the illustration.

1. Install one saddle weldment (Item 1) onto front vertical bar of engine guard with the open side facing in. Install one weldment (Item 2) to the bottom horizontal bar with the open side facing down. Use the provided hose clamps (Item 6). Leave them loose enough, at this time, that they can be moved.



2. Install the mounting bar (Item 3) onto the saddle weldments using the socket head cap screws, star washers and flat washers (Items 7, 8 & 9). Snug, but do not tighten.

3. To select the desired height and angle of the floorboards, install anti-swivel bracket (Item 4) and floorboard (Item 5), using the 5/16" bolt and star washer (Items 10 & 11) into one of the 3 mounting holes in the mounting bar. The angle can be changed by sliding the saddle weldments up or down the engine guard.

4. After the desired height and angle are achieved, remove the floorboard and tighten the hose clamps and socket head cap screws securely.

5. Reinstall the anti-swivel brackets and floorboards. Tighten mounting bolts securely.

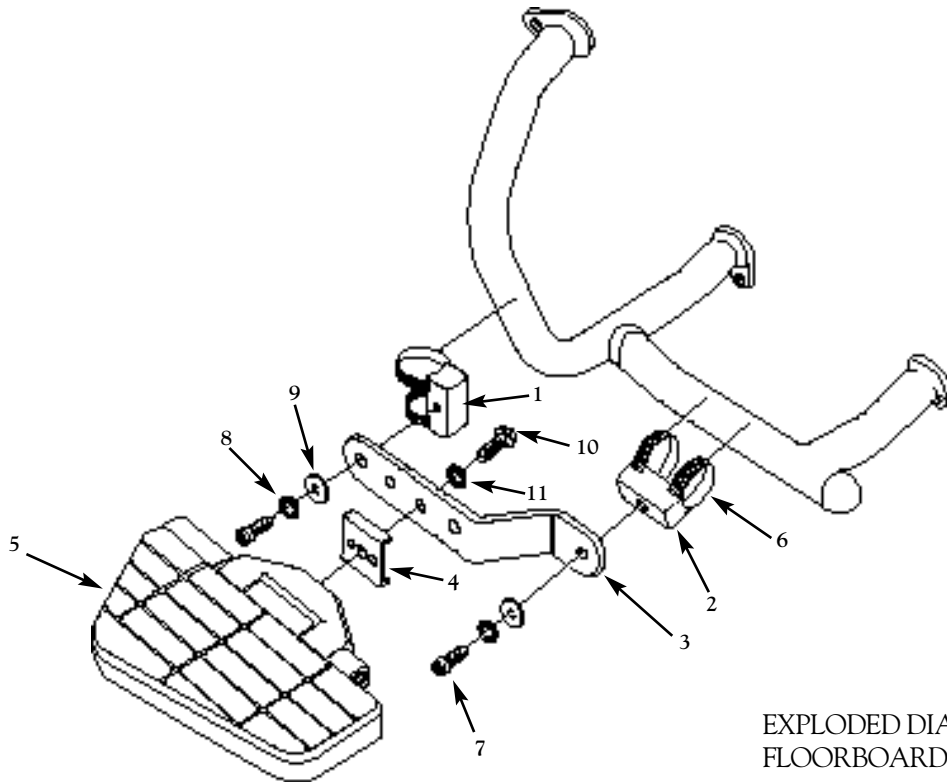
**WARNING!:** Before operating motorcycle, be sure all hardware is tight.

## DRAG SPECIALTIES

Box 9336, Minneapolis, MN 55440

# INSTALLATION INSTRUCTIONS

## DRAG SPECIALTIES ENGINE GUARD FLOORBOARDS F/1998 GL Models w/ OEM ENGINE GUARDS P/N DS-72021/2



EXPLODED DIAGRAM OF  
FLOORBOARD ASSEMBLY

### ENGINE GUARD FLOORBOARDS F/ 1998 GL MODELS W/ OEM ENGINE GUARDS

ITEM	PART #	DESCRIPTION	QTY
1	DS-720223	Saddle weldment	2
2	DS-720228-2	Saddle weldment	2
3	DS-720234	Board mounting bar	2
4	DS-720238	Anti-swivel bracket	2
5	DS-720210-1	Floorboard, left	1
5	DS-720210-2	Floorboard, right	1
-	DS-720228-4	Rubber insert, left	1
-	DS-720228-5	Rubber insert, right	1
-	DS-720210-8	Chrome trim plate, left	1
-	DS-720210-9	Chrome trim plate, right	1
-	DS-720210A-3	Pivot bracket w/ pins, chrome	2
-	DS-720210-10	Spring clip	2
-	DS-720210-11	Pivot pin	2
-	DS-720210-12	E-clip	2
		5mm-.8 x 15mm hex bolt, zinc	4
		5mm-.8 acorn nut, chrome	4
		5mm-.8 x 10mm pan phil screw din 84, zinc	4
		5mm lock washer, zinc	8
6	DS-720228-3	Hose clamps	8
7		6mm-1.0 x 20mm socket head, chrome	4
8		6mm internal tooth washer, zinc	4
9		6mm washer, chrome	4
10		5/16"-18 x 7/8" hex bolt, zinc	2
11		5/16" internal star washer	2

**DRAG SPECIALTIES**

Box 9336, Minneapolis, MN 55440