

# MIRROR WINGS FOR HONDA GOLD WING/F6B

## INCLUDED COMPONENTS:

- (1) Right wing assembly
- (1) Left wing assembly
- (2) Wedge washlockers
- (1) Instruction flyer

## INSTALLATION TOOLS:

- Phillips screwdriver
- 3/8" combination wrench
- 7/16" combination wrench

## NOTE:

These wings use the rubber mirror boot as their stop so at the full closed position they will not touch the painted portion of the cowling.

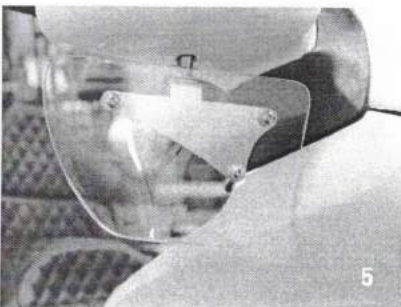
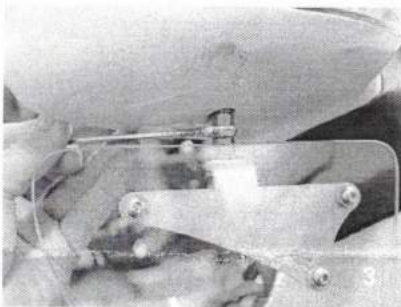
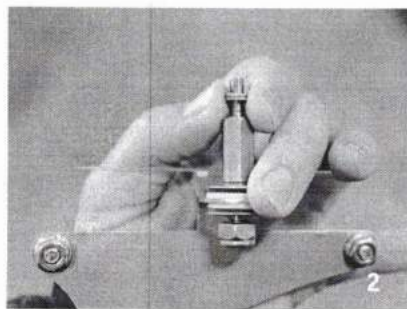
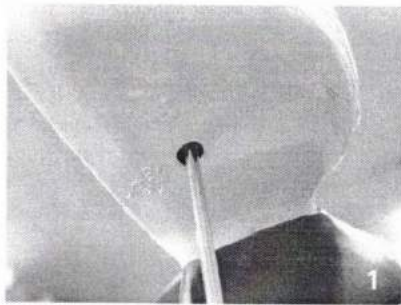
## QUESTIONS?



## EMAIL:

info@getklocked.com

CALL: (605) 996.3700



## RIGHT SIDE

1. Remove the Phillips head screw from the underside of the right-side mirror. **(1)**
2. Install the wedged lock washer onto the 5mm portion of the provided stud. **(2)**
3. Install the stud by hand into the brass mirror mount and then use a 3/8" wrench to torque to factory specification. **(3)**
4. While holding the stud, torque the 1/4-20 locknut using a 7/16" wrench. This locknut should allow the wing to pivot without loosening the stud in the mirror mount, approx. 15 in-lbs. **(4)**.
5. Product install complete. **(5)**

## REPEAT STEPS FOR LEFT SIDE

Klock Werks cannot be held responsible for any damage resulting from improper installation performed by any consumer or their dealer.

KLOCK WERKS // WWW.GETKLOCKED.COM